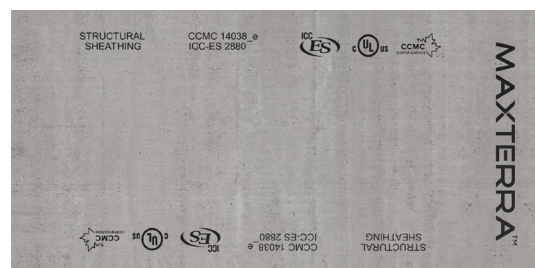


NEXGEN MAXTERRA™ MgO SHEATHING FOR DISASTER RESISTANCE AND LONG LIFE

AN IDEAL SHEATHING SOLUTION

NEXGEN MAXTERRA™ MgO board products are high density structurally rated magnesium oxide sheathing that can be used as a direct replacement for: plywood and OSB for exterior sheathing, interior and exterior gypsum panels, subfloors, concrete underlayment, fire rated walls for stairwells and elevator shafts, and tile backer panels.



BENEFITS OF MAXTERRA SHEATHING

Fire Resistance

All of the NEXGEN MgO disaster resistant attributes increase life safety and protect your investment. The MgO panels are non-combustible with zero flame and smoke spread. 1-, 2- or 4-hour fire rated walls.

Easy Installation

MAXTERRA uses traditional construction methods including sawing, scoring & break, and screws. Fast installation with less steps using a single trade for both interior and exterior sheathing applications.

Water Resistance

Using a building product that is water resistant has never made more sense. MgO products do not rapidly deteriorate when immersed in water over a short period and can maintain structural stability.

Eco-Friendly

NEXGEN MAXTERRA is made using environmentally conscious materials and is non-toxic, no VOCs, no off-gassing. The manufacturing process is carbon negative and end of life disposal is low impact.

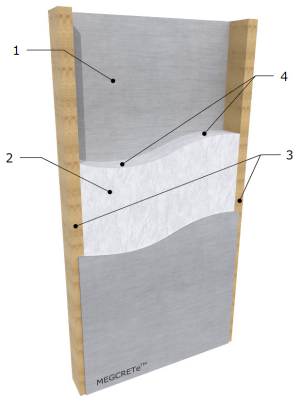
THE BEST TEST RESULTS AND CERTIFICATIONS



1-Hour Fire Rated

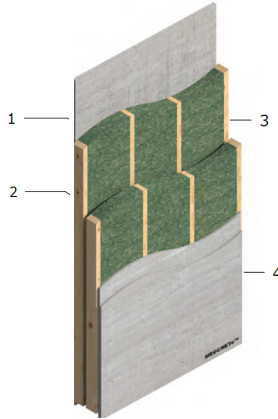
2-Hour Fire Rated

2-Hour Firewall Steel



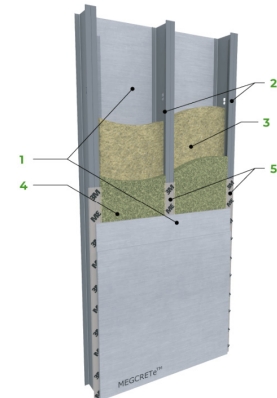
F-051 Assembly

1. Exterior & Interior MAXTERRA 1/2" Sheathing
2. EPS Insulation
3. Double 1.75"x7.25" @ 48" OC
4. Optional Wire Chases @ 24" OC



F-012 Assembly

1. Exterior Double 1/2" MAXTERRA
2. Single 2"x4" SPF @16" OC
3. EPS Insulation
4. Interior Double 1/2" MAXTERRA



QAI- B1073-1d

1. Two Layers 1/2" MAXTERRA
2. Steel Studs - Double 8"x16 Gauge @24" OC
3. 5.5" Roxul Comfort Batt Insulation
4. 3.5" Roxul Comfort Batt Insulation
5. 3M 3015 Barrier

Panel Thickness Options - * in stock

Imperial:

1/8" | 1/4" | 3/8"
1/2" * | 5/8" | 3/4"*

Metric:

3mm | 6mm | 10mm
12mm* | 15mm | 18mm*

Panel Dimension Options - all in stock

Imperial:

4'x 8' | 4'x9'
4'x10' | 4'x12'

Metric:

1220x2440, 1220x2750
1220 x 3050, 1220 x 3660

Panel Attributes

4'x8'x1/2" Panel is 2.2 LBS/SF
4'x8'x3/4" Panel is 3.3 LBS/SF
All boards are square finished standard

Product Availability and Storage

NEXGEN MgO boards are stocked in North America for timely shipment

Store board horizontally
Do not stack above 12'
All pallets 4800 lbs max shipment

Code Compliance - refer to NEXGEN Technical Data Sheet (TDS) on nexgenbp.com

National	Fire Ratings	Water Resistance	Strength	Mold Resistance
ICC-ES-ESR-2880	ASTM E135 ASTM E119 ASTM E136	ASTM C1186 ASTM E96	ASTM C1185-03 ASTM D2394	ASTM D3273
CCMC 14038_e	UL -263 ULC S102	ASTM C1185 Freeze/Thaw	ASTM C1325 Blast Rating Level 8	ASTM D5116 No Toxic VOC's



Scan the QR code to [go to the NEXGEN Resources web page](#) - insights, videos, technical and installation documents.

NEXGEN Building Products 1904 Manatee Ave #300 Bradenton, FL 34205
www.nexgenbp.com (855) 639-4361