

**CSI:** DIVISION: 09 00 00—FINISHES  
Section: 09 28 15—Magnesium Oxide Backing Panels

**Product Certification System:**

The ICC-ES product-certification system includes evaluating reports of tests of standard manufactured product, prepared by accredited testing laboratories and provided by the listee, to verify compliance with applicable codes and standards. The system also involves factory inspections, and assessment and surveillance of the listee's quality system.

**Product:** MAXTERRA™ 12 MM AND 16 MM THICK MAGNESIUM OXIDE PANELS

**Listee:** NEXGEN BUILDING PRODUCTS LLC

**Evaluation:** Maxterra™ 12 mm and 16 mm thick magnesium oxide panels were evaluated based on tested load bearing wall assemblies consisting of building-material components described in the Design Listings, tested in accordance with the following standards:

- ASTM E119-18B, Standard Test Methods for Fire Tests of Building Construction and Materials, ASTM International.
- UL 263-11 (with revisions through March 2018), Standard for Fire Tests of Building Construction and Materials, Underwriters Laboratories, Inc.

**Findings:** Evaluation of Maxterra™ 12 mm and 16 mm thick magnesium oxide panels as components of the assembly is based on testing in accordance with the applicable test method as referenced in each ICC Design No., and as referenced in the applicable sections of the following code editions:

- 2021 *International Building Code*® (IBC)  
Applicable Section: 703.2
- 2021 *International Residential Code*® (IRC)  
Applicable Section: R302

**Identification:**

1. The ICC-ES mark of conformity, electronic labeling, or the listing report number (ICC-ES [ESL-1568](#)) and when applicable the ICC-ES listing mark, along with the name, registered trademark, or registered logo of the listee must be included in the product label.
2. In addition, each Maxterra™ 12 mm and 16 mm thick magnesium oxide panel shall be identified by a stamp or label on the panel bearing the name of the report holder, the product name, and the panel thickness.
3. The report holder's contact information is the following:

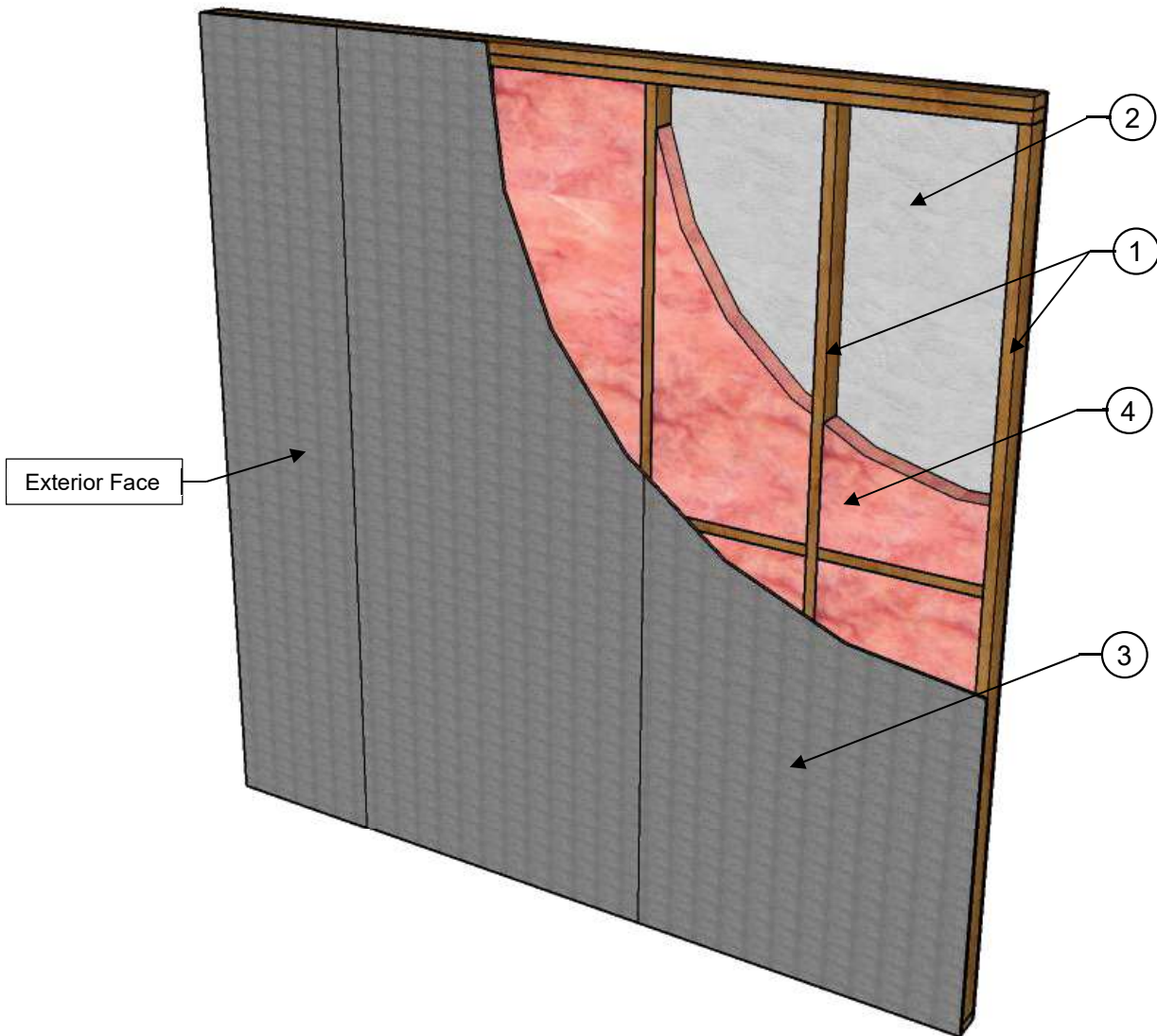
**NEXGEN BUILDING PRODUCTS LLC**  
**1904 MANATEE AVE WEST #300**  
**BRADENTON, FLORIDA 34205**  
**(855) 639-4361**  
[www.nexgenbp.com](http://www.nexgenbp.com)  
[support@nexgenbp.com](mailto:support@nexgenbp.com)

**Installation:** The Maxterra™ 12 mm and 16 mm thick magnesium oxide panels must be installed in accordance with the NEXGEN Building Products LLC published installation instructions and applicable codes.

**Conditions of Listing:**

1. The listing report addresses only conformance with the standards and code sections noted above.
2. Approval of the product's use is the sole responsibility of the local code official.
3. The listing applies only to the materials tested and as submitted for review by ICC-ES.
4. The design loads (ASD) used in testing for the load-bearing wood-framed walls are based on the allowable axial load of the wall framing studs and support bracing (if applicable) in accordance with the NDS (National Design Specification for Wood Construction), unless noted otherwise. Sheathing was not considered in the calculation of the design loads.
5. The design loads (ASD) used in testing for the load-bearing cold-formed steel-framed walls are based on the allowable axial load of the wall framing studs and support bracing (if applicable) in accordance with AISI S100 (North American Specification for the Design of Cold-Formed Steel Structural Members), unless noted otherwise. Sheathing was not considered in the calculation of the design loads.
6. Greater stud sizes (depths) shall be permitted to be used in metal- or wood-stud systems in accordance with Section 12.5.2 of ASTM E2032 (Standard Guide for Extension of Data from Fire Resistance Tests Conducting in Accordance with ASTM E119) and the principles pertaining to the fire resistance rating of wall assemblies.
7. For an assembly tested in accordance with ASTM E119, the Assembly Rating shall apply to both sides of the assembly (fire from either face of the wall), unless noted otherwise.
8. NEXGEN Building Products LLC's Maxterra™ 12 mm and 16 mm thick magnesium oxide panels are manufactured under a quality control program with inspections by ICC-ES.

**Applicant:** NEXGEN BUILDING PRODUCTS LLC  
**Product:** MAXTERRA™ 12 MM THICK MAGNESIUM OXIDE PANELS  
**Standard:** ASTM E119 (UL 263)  
**Assembly Rating:** 1-Hour  
**Load:** Load Bearing (100% Design Load) – See Conditions of Listing Item #4  
*MOS = Magnesium Oxide Sheathing*



Listings are not to be construed as representing aesthetics or any other attributes not specifically addressed, nor are they to be construed as an endorsement of the subject of the listing or a recommendation for its use. There is no warranty by ICC Evaluation Service, LLC, express or implied, as to any finding or other matter in this listing, or as to any product covered by the listing.

**COMPONENTS OF CONSTRUCTION:**

ITEM NO.	COMPONENTS	MATERIALS
1	<b>Wood Framing—</b>	<p>Nominal 2-inch by 4-inch (50.8 mm by 101.6 mm) wood studs with a governing slenderness ratio (<math>I_e/d</math>) of 38.5, spaced maximum 24 inches (609.6 mm) on center, with blocking at mid-height in the weak-axis direction, are secured to top and bottom plates with 3-inch (76.2 mm) long x 0.131-inch (3.33 mm) diameter smooth shank framing nails. A double top plate is secured to the first top plate with 3-inch (76.2 mm) long x 0.131-inch (3.33 mm) diameter nails spaced 16 inches (406.4 mm) on center. Full-depth blocking is installed between each stud at mid-height of the wall assembly and secured with 3-inch (76.2 mm) long x 0.131-inch (3.33 mm) diameter nails.</p> <p>Note: See Conditions of Listing Items 4 and 6 of <a href="#">ESL-1568</a>.</p>
2	<b>Interior Sheathing—</b>	<p>One layer of minimum <math>5/8</math>-inch (15.9 mm) Type X or Type C gypsum wallboard, complying with ASTM C1396, must be secured directly to the framing, on the interior side of the wall assembly, using minimum <math>1\frac{5}{8}</math>-inch (41.3 mm) long Type W bugle-head steel screws spaced at 6 inches (152.4 mm) on center along the perimeter and in the field of the gypsum board. Gypsum wallboard must be installed vertically to the studs. All vertical seams must fall on studs and must be staggered from one side of the assembly to the opposite sides of the assembly. All sheathing joints must be treated with two coats of joint compound with nominal 2-inch (50.8 mm) wide paper tape embedded in the first layer of compound over all joints. All fastener heads must be covered with one layer of joint compound.</p>
3	<b>Exterior Sheathing—</b>	<p>One layer of Maxterra™ 12 mm (0.47-inch) thick magnesium oxide panels must be secured directly to the framing, on the exterior side of the wall assembly, using minimum <math>1\frac{5}{8}</math>-inch (41.3 mm) long No. 8 coarse thread, flat wafer head cement board screws spaced at 8 inches (203.2 mm) on center along the perimeter and in the field of the panel. Maxterra™ panels must be installed vertically to the studs. All vertical seams must fall on studs and must be staggered from one side of the assembly to the opposite sides of the assembly. Maxterra™ panel edge joints are permitted to be left uncovered without joint compound. Fastener heads are permitted to be left exposed.</p>
4	<b>Cavity Insulation—</b>  Use either A or B	<p><b>A —</b> Minimum R-13 fiberglass batt insulation, bearing the UL Classification Marking for surface burning and/or fire resistance, with nominal thickness of <math>3\frac{1}{2}</math>-inch (89 mm) is friction-fit into each stud cavity. The insulation thickness must match the stud cavity depth.</p> <p><b>B —</b> Minimum R-13 mineral wool insulation, bearing the UL Classification Marking for surface burning and/or fire resistance, with a nominal thickness of <math>3\frac{1}{2}</math>-inch (89 mm) and a minimum density of 2.0 lbs./ft<sup>3</sup> (32 kg/m<sup>3</sup>) is friction-fit into each stud cavity. The insulation thickness must match the stud cavity depth.</p>
5	<b>Exterior Cladding (Not Shown)—</b>	<p>Where the assembly is used as an exterior wall, any exterior cladding may be included, as authorized by the authority having jurisdiction, and must be installed in accordance with the manufacturer's installation instructions.</p>

For SI: 1 inch = 25.4 mm, 1 foot = 304.8 mm, 1 lbs./ft<sup>3</sup> = 16.01 kg/m<sup>3</sup>.